

An abstract, vibrant artwork featuring a dense composition of various colors including blue, orange, red, yellow, green, and black. The colors are applied in a textured, layered manner, with some areas appearing more saturated than others, creating a rich, multi-dimensional visual effect.

**SMART  
GALLERY  
COMMISSIONS  
GUIDE  
2023/2024**

ARTWORK BY  
PAUL HELLEN



**ART COMMISSIONS WITH SMART GALLERY**

# CONTENTS

Introduction	2
Why Commission?	3
The Process	4
Our Artists	5
Paul Hellen	6-7
Amanda Stratford	8-9
Gordon Barker	10-11
Jayne Deach	12-13
Graham Colthorpe	14-15
Marie Louise Wrightson	16-17
Chris Sheldrake	18-19
Our Terms	20
Contact	21

---



ARTWORK BY  
**JAYNE DEACH**





ARTWORK BY  
**CHRIS SHELDRAKE**

## INTRODUCTION

The most extraordinary element of commissioning an artwork is that it gives you the opportunity to own a completely personalised piece, created by an artist whose work already speaks to you.

Commissioning a work of art allows you to become a part of the creative process, developing ideas, imagery and form in partnership with the artist to create something that portrays a piece of both of you.

A bespoke creative service like this can only produce work that is authentic, intimate and personal. A perfect blend of your imagination and the artist's creative skill, combined into a one-of-a-kind piece. Forever.

---





ARTWORK BY  
MARIE LOUISE  
WRIGHTSON



## WHY COMMISSION?

### PERSONALISATION

Have any personal element celebrated in the piece, whether it be memories, scenery, people, pets or words.

### INTERIOR DESIGN

Commission works of art that directly align with your home aesthetic, or portray the feeling you want to bring to any room

### PORTRAITURE

Immortalise yourself or your loved ones with a commissioned portrait by an artist who's style captures the subject perfectly.

### GIFTING

Surprise a loved one with a personalised piece by their favourite artist, made just for them. Truly a gift for life.

# THE PROCESS



**01.**

## CHOOSE AN ARTIST

Using this brochure as a guide, select an artist that best speaks to your ideas and creative sensibilities



**02.**

## SET THE BRIEF

With Smart Gallery's support, develop a brief for the artist that presents exactly the artwork you have in mind



**03.**

## CREATION

While the artist works on your commission, sit back and enjoy updates on the creative process and watch the piece develop



**04**

## FRAMING AND DELIVERY

Choose the perfect frame for your piece, and Smart Gallery will do the rest. A fully framed bespoke artwork, just for you

ARTWORK BY  
GRAHAM COLTHORPE



OUR ARTISTS



PAUL  
HELLEN



# ABOUT PAUL HELLEN

## MEDIUM

Acrylic, Water-Based Oils

## SIZING

Starts at 16 x 24"

## PRICING

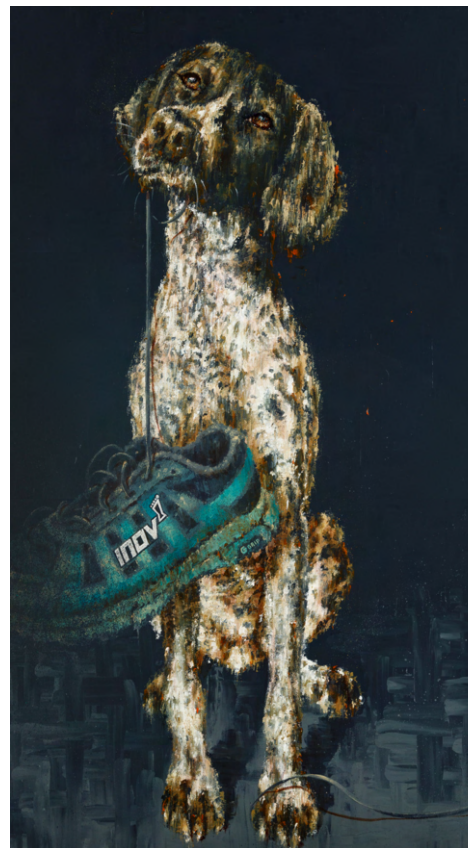
Starts at £390

Paul Hellen is a painter from Yorkshire and has always found art natural, painting portraits from a very early age. In recent years, Paul has been painting with more realism, but attempts to retain the abstraction of colour and bold marks which make his pictures so unique. Always trying to introduce abstraction without losing the essence of the subject, Paul makes sure each and every mark is fluid and expressive to create his uncontrived style: "I like honest marks as I feel they should explicitly express the movement that created them." - Paul Hellen

Having previously gained a Fine Art degree at Leeds College of Art and Design, Paul is currently studying for a PhD in the Philosophy of Science at Leeds University.



AMANDA  
STRATFORD





# ABOUT

## AMANDA STRATFORD

**MEDIUM**  
Acrylics

**SIZING**  
Starts at 24 x 24"

**PRICING**  
Starts at £1,450



Amanda Stratford is a self-taught painter whose work and technique are inspired by a 25-year-long career in exhibition and commercial interior design, combined with a 7-year trip around the West Indies, where the colour and vibrancy of this part of the world continues to shine through in her work.

A self-taught artist, Amanda uses acrylic paints and prefers a palette knife to brushwork. Painting to a larger format is an important part of the process for Amanda and with her strong sense of design and colour she is able to mix vibrant tones directly on the canvas, laying on heavy texture to build up the image. Her sketching is minimal, with the image and colour developing as the painting emerges.



GORDON  
BARKER



# ABOUT GORDON BARKER

## MEDIUM

Acrylic on paper

## SIZING

Starts at 12 x 16"

## PRICING

Starts at £315



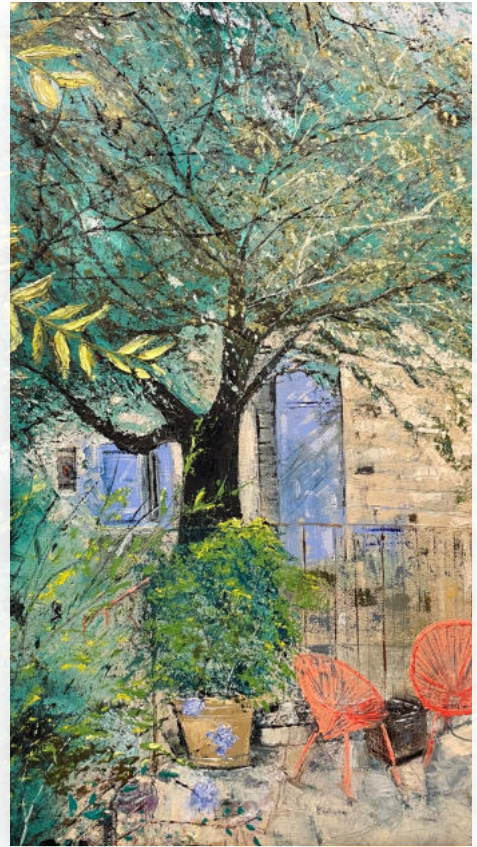
Gordon Barker is an established artist based in Northamptonshire, England. He has built a reputation that has attracted global attention for producing extraordinary and timeless art that appeals to all ages. As a naïve artist, he approaches each piece from a unique perspective, creating interesting and complex art that embodies his own personal style.

With a passion for creating art that brings happiness and pleasure, Barker is dedicated to producing extraordinary artwork that moves people. His work can be found in renowned corporate offices such as MTV and AT&T, private collections and galleries across the globe.





JAYNE  
DEACH



# ABOUT JAYNE DEACH

**MEDIUM**  
Oils

**SIZING**  
Starts at 20 x 24"

**PRICING**  
Starts at £780



Born in Rotherham, Jayne Deach always loved painting and drawing as a young girl, and after many years raising her family in Malaga, she then returned to the UK in 2014 to settle in south Manchester and finally began painting again. It was during a local art class where she was introduced to oils and palette knife techniques and absolutely fell for it. Deach now specialises in creating impressionistic, graceful, and textured works depicting land, city and seascapes, finding inspiration from the beauty of nature around her.

"It makes me extremely happy when someone finds a connection in my work and loves it enough to take it home with them." - Jayne Deach



**GRAHAM  
COLTHORPE**





# ABOUT GRAHAM COLTHORPE

## MEDIUM

Acrylic, Oil and Watercolour

## SIZING

Starts at 12 x 16"

## PRICING

Starts at £210



Graham Colthorpe was born in Leeds in 1953 and is a self-taught artist who took up painting at the age of twenty. He says he was 'looking for a direction in life' and had no idea what he wanted to do until he walked into Leeds City Art Gallery for the first time. It was then he knew that he wanted to become an artist.

Colthorpe works in watercolour, oil and acrylic. He tries to create dramatic light effects, making an ordinary scene into something special. It is this keen creation of atmosphere that has made him such a successful artist. His career now spans 45 years and his work hangs in private collections in the UK, Europe and Australia.



MARIE  
LOUISE  
WRIGHTSON



Marie Louise Wrightson

Marie Louise Wrightson

# ABOUT

## MARIE LOUISE WRIGHTSON

**MEDIUM**  
Oils

**SIZING**  
Starts at 5 x 10"

**PRICING**  
Starts at £900



Marie Louise Wrightson graduated from Duncan of Jordanstone School of Art in Dundee in 2005 with both a Bachelors and Masters in Fine Art, where she developed her signature modern twist on a traditional fine art style, gaining her an excellent reputation soon after graduating.

Wrightson's work is heavily influenced by fairy tales, cartoons, films and children's books as well as childhood memories of trips to the seaside, spellbound by an array of colour in sweetshop windows, dazzling sights and sounds to be savoured at amusements and merry-go-round rides. Wrightson's figures enjoy playful novelties and tempting indulgences, embracing the fun and fantasy of her childhood spirit.





CHRIS  
SHELDRAKE



# ABOUT CHRIS SHELDRAKE

## MEDIUM

Oil, Acrylic, Watercolour

## SIZING

Starts at 12 x 16"

## PRICING

Starts at £770



As a professional self-taught artist, the study of light, movement and atmosphere are essential requirements Sheldrake needs to create an expression of our changing world. Sheldrake's work is characterised by applying these elements and exaggerating the subject to affect a distinctive style. Sheldrake works mainly from sketches and photographs, and paints large-scale pieces mostly from his studio using oil, acrylic and watercolours.

"I hope the viewer is enticed to use their imagination and search for the elusive reality in my paintings. I try to search out unusual scenes, being lucky enough to have travelled around the world." – Chris Sheldrake





## OUR TERMS

To keep the commission process clear and simple for all involved, Smart Gallery have some terms in place to assure everything runs smoothly:

1. All communications during the process will be handled by Smart Gallery
2. Prior to any payment being taken, the brief, timescale and cost will be agreed by all three parties.
3. A 50% deposit will be paid by the client on commencement of the process. The remaining 50% balance is to be paid on completion.
4. The client can request up to three changes to the work during the creation process. Any further changes will be charged individually.
5. The cost of the commission includes framing up to £100.

NB: All sizes and prices shown on artists' pages are indicative - there are no minimum limits for sizing, and each commission will be priced individually based on the given brief.

---



ARTWORK BY  
AMANDA STRATFORD



## CONTACT

Whether you have a commission brief ready for one of our artists, or are interested in the process but unsure where to begin, simply contact us at Smart Gallery and we'll provide any advice, support or services you may require.

[sales@smartgallery.co.uk](mailto:sales@smartgallery.co.uk)

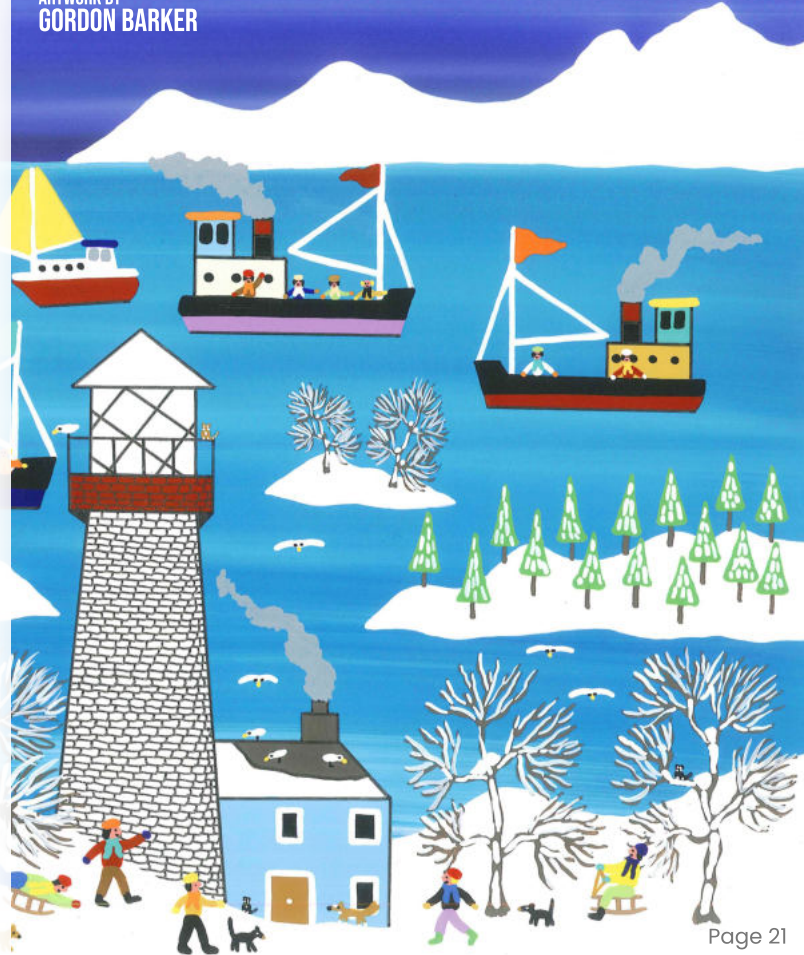
0113 212 0363

132 Harrogate Road  
Chapel Allerton  
Leeds  
LS7 4NZ

[www.smartgallery.co.uk](http://www.smartgallery.co.uk)

---

ARTWORK BY  
GORDON BARKER



**SMART GALLERY**  
**COMMISSIONS GUIDE**  
**2023 - 2024**



[www.smartgallery.co.uk](http://www.smartgallery.co.uk)